

HIGHLIGHTS

- The expected rainy conditions over most areas in the country are expected to continue supporting soil moisture improvement for crop growth and development.
- Farmers are advised to continue making follow-ups on crops, and crop fields to manage any negative adverse that may happen
- Livestock keepers are advised to plant more pastures and harvest rainwater for future use

SYNOPTIC SUMMARY DURING JANUARY 11-20, 2025

During the dekad, the southern hemisphere high pressure systems (St. Helena and Mascarenes) continued to relax while the northern hemisphere high pressure systems (Azores and Siberian) continued to intensify. This condition maintained the gradual southward movement of the meridional arm of the Inter Tropical Convergence Zone (ITCZ), into the western part of our country, south western highlands and southern region.

On the other hand, SSTs over west Indian ocean (East African coast) was slightly warmer than normal. This condition enhanced precipitation making mechanisms (zonal arm of ITCZ) over the coastal areas of our country and the north eastern highlands.

The above weather systems resulted into thundershowers over the western part of our country south western highlands and southern region. Moreover, periods of rain showers were reported over few areas of central, north eastern highlands and coastal areas.

RAINFALL PERFORMANCE DURING JANUARY 11-20, 2025

During the dekad, most areas of the country experienced rainy conditions with dekadal rainfall amounts ranging from at least 1 mm to 100 mm.. However, significant rainfall amount of more than 100 mm was noted over a few areas around Ruvuma and Njombe regions as shown in Figure1.

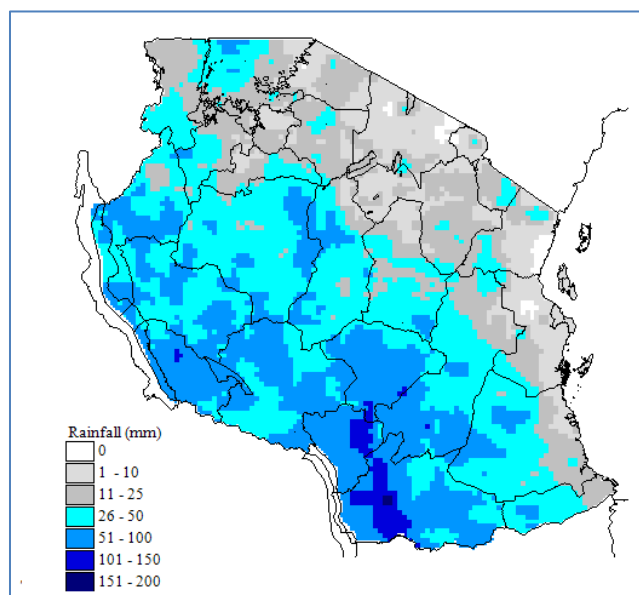


Figure 1: Total dekadal rainfall for January 11-20, 2025

AGROMETEOROLOGICAL SUMMARY DURING JANUARY 11-20, 2025

During the dekad under review, most areas of the country experienced rainy conditions that supported crop growth and development.

In most areas around Lake Victoria, maize crops were at the wax stage except in the Kagera region, where maize crops were at full ripeness, as in the Tanga region on the northern coast.

In unimodal areas, maize crops are currently in the vegetative stage, particularly in Tabora, Kigoma, Katavi

No.11: 2024/25 Cropping Season

Songwe, Mbeya and Njombe regions, while in Tabora regions maize is in a tasseling stage.

The paddy crop was in third leaf in Morogoro, while farmers in Tabora region were engaged in paddy farm preparation. The coffee crop is in the berry soft stage in the Songwe and Kilimanjaro region.

Water and pasture for livestock and wildlife continued to improve, particularly in the areas that experienced rainy conditions.

HYDROMETEOROLOGICAL CONDITIONS DURING JANUARY 11-20, 2025

Water levels in dams and river flow discharges slightly increased due to rainy conditions experienced over most areas.

EXPECTED SYNOPTIC CONDITIONS DURING JANUARY 21-31, 2025

During this dekad the southern hemisphere high pressure systems are expected to continue relaxing while the northern hemisphere high pressure systems are expected to continue intensifying. This condition is expected to maintain the gradual southward movement of the meridional arm of the ITCZ, into the western part of our country, south western highlands and southern region. On the other hand, SSTs over west Indian ocean (East African coast) is expected to be slightly warmer than normal. This condition is expected to enhance precipitation making mechanisms (zonal arm of ITCZ) over some areas of the coast of our country and nearby areas.

EXPECTED WEATHER CONDITIONS DURING JANUARY 21-31, 2025

Areas around the Lake Victoria Basin (Kagera, Geita, Shinyanga, Mwanza, Simiyu, and Mara regions), western regions (Kigoma, Katavi, and Tabora regions) south western highlands (Rukwa, Songwe, Mbeya, Njombe, and Iringa regions) and southern regions (Ruvuma region and southern part of Morogoro region) are expected to feature thundershowers over few areas.

North eastern highlands (Arusha, Manyara, and Kilimanjaro regions) are expected to feature dry conditions.

Northern coast (Tanga, northern part of Morogoro region, Pwani, Dar es Salaam regions, including the isles of

Review of January 11-20, 2025, and Outlook for January 21-31, 2025

Unguja and Pemba), central areas (Dodoma and Singida regions) and southern coast (Mtwara and Lindi regions) are expected to experience periods of rain showers over few areas.

AGROMETEOROLOGICAL OUTLOOK AND ADVISORY DURING JANUARY 21-31, 2025

The expected rainy conditions over most areas in the country are expected to continue supporting soil moisture improvement for crop growth and development.

The dry conditions expected over the northeastern highlands are likely to support drying of matured crops.

Farmers and extension officers are advised to continue making follow-ups on crops and crop fields for management and control of excessive water, and the outbreak of pests and diseases.

Livestock keepers are advised to collect pasture and harvest rainwater for future use.

Fishing communities are advised to continue making follow-ups on daily weather forecasts, especially for the Indian Ocean and the Great Lakes to make decisions on the right time to go out fishing to avoid the effects of severe weather, particularly strong winds and large waves.

EXPECTED HYDROMETEOROLOGICAL CONDITIONS DURING JANUARY 21-31, 2025

Water levels in dams and river flow discharges are expected to continue increasing due to expected rainy condition in most areas. Water users are advised to harvest rainwater for future use.